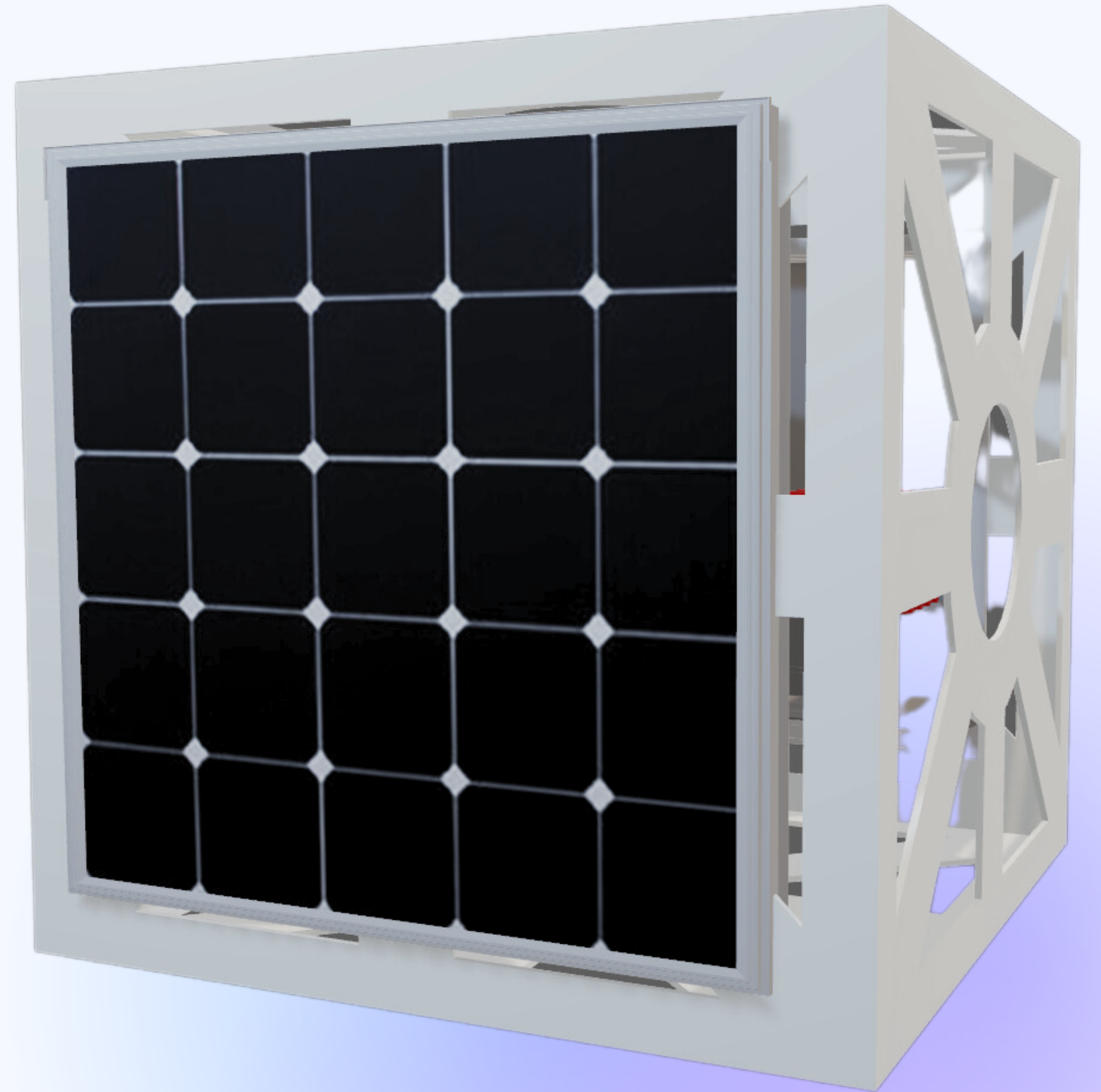
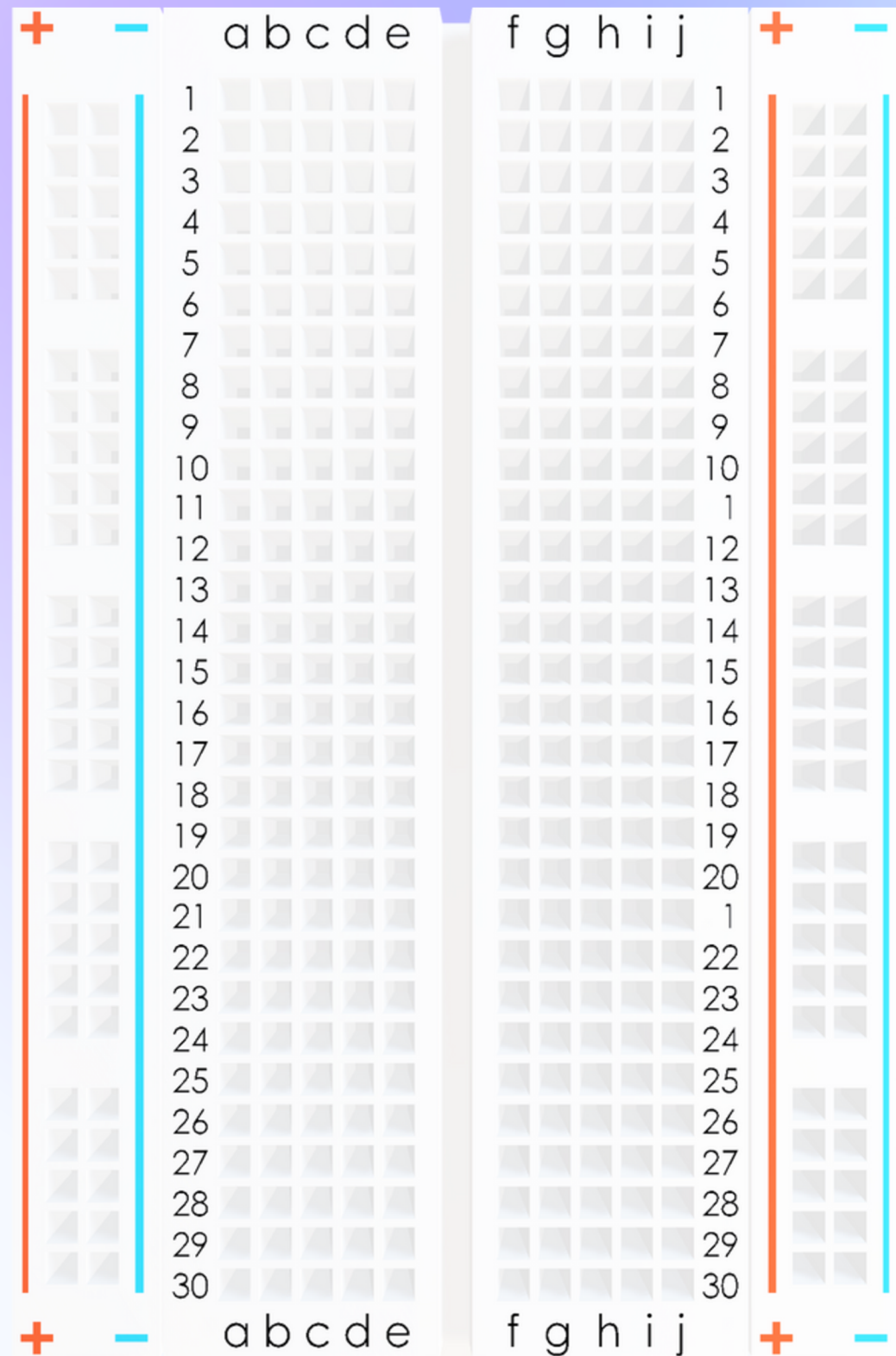


**CubeSat
Circuit
Assembly**

**立方体卫星
电路组件**



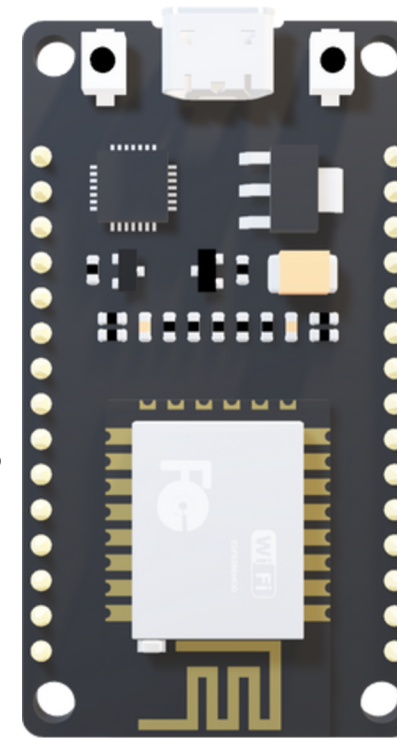


Breadboard
面包板



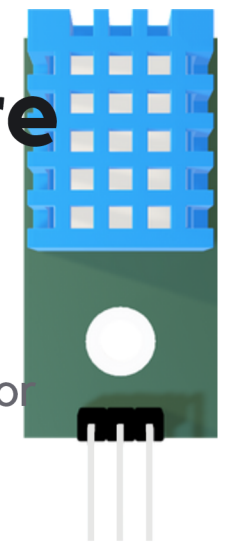
Brain 脑

The microcontroller that acts
as the brain of the circuit
充当电路大脑的微控制器



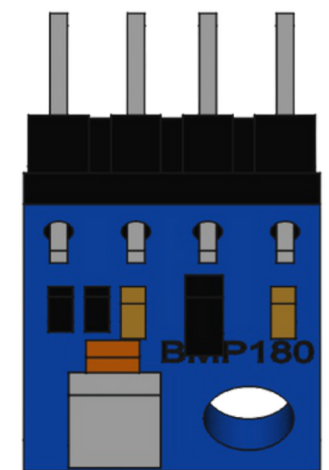
Temperature 温度

Temperature and humidity sensor
温湿度传感器



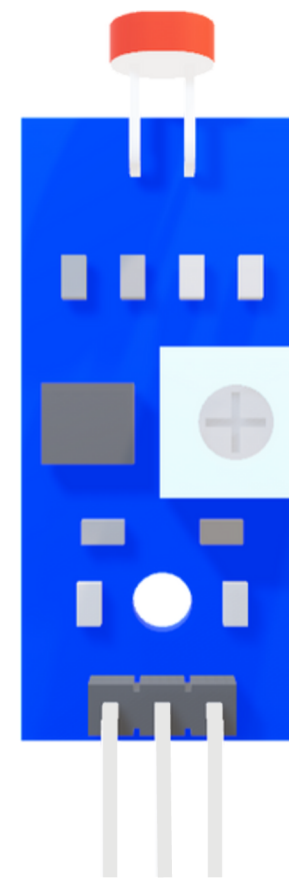
Pressure 压力

an atmospheric pressure sensor
大气压力传感器



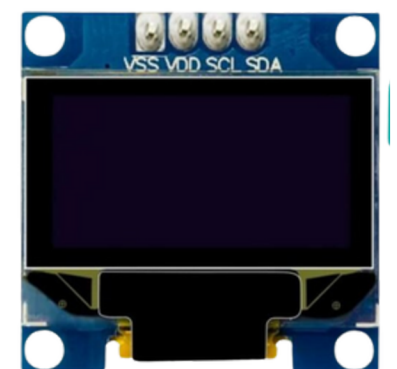
Light 光

Module measures light
intensity
模块测量光强度



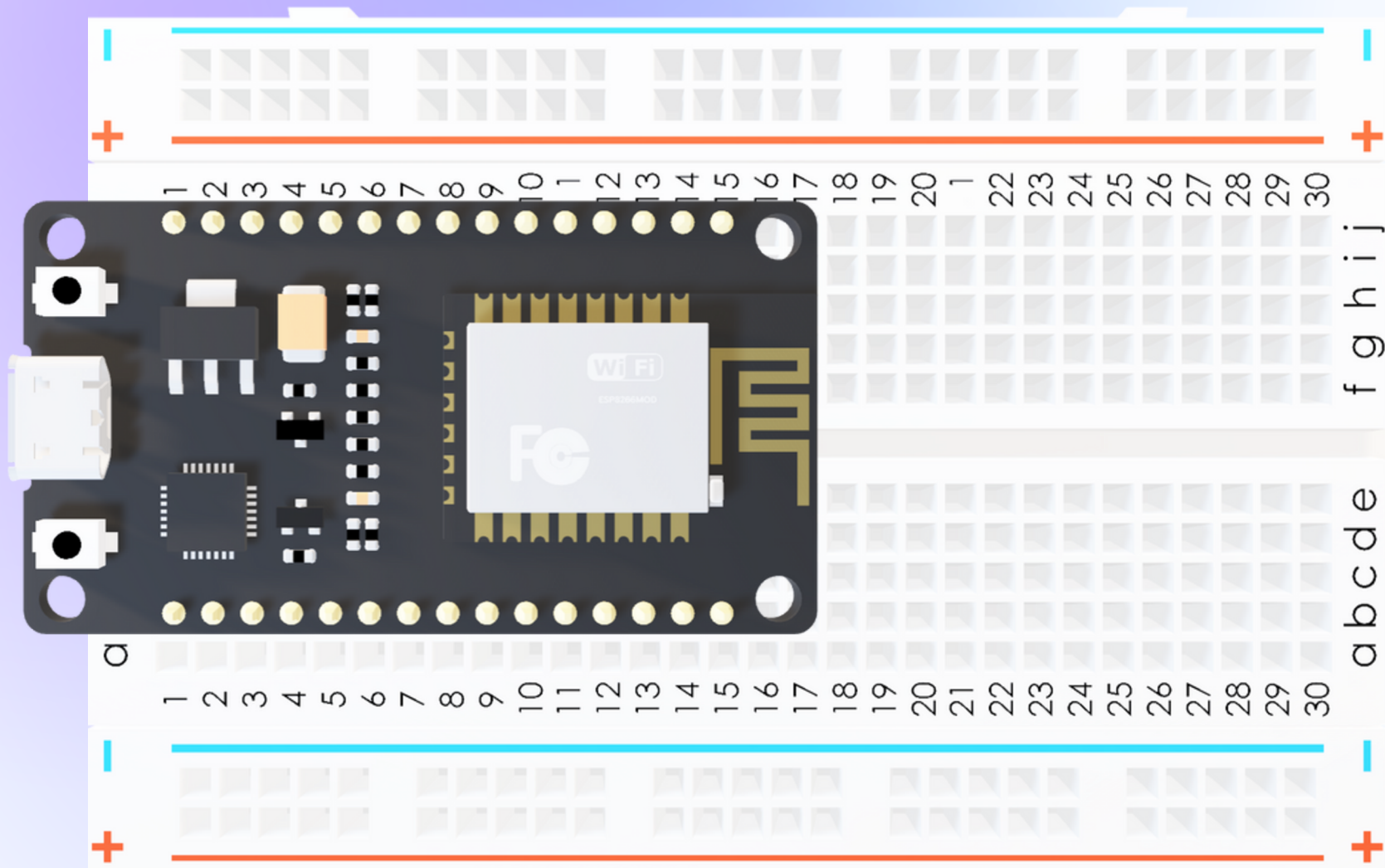
Display 展示

Display to read sensor data
显示读取传感器数据



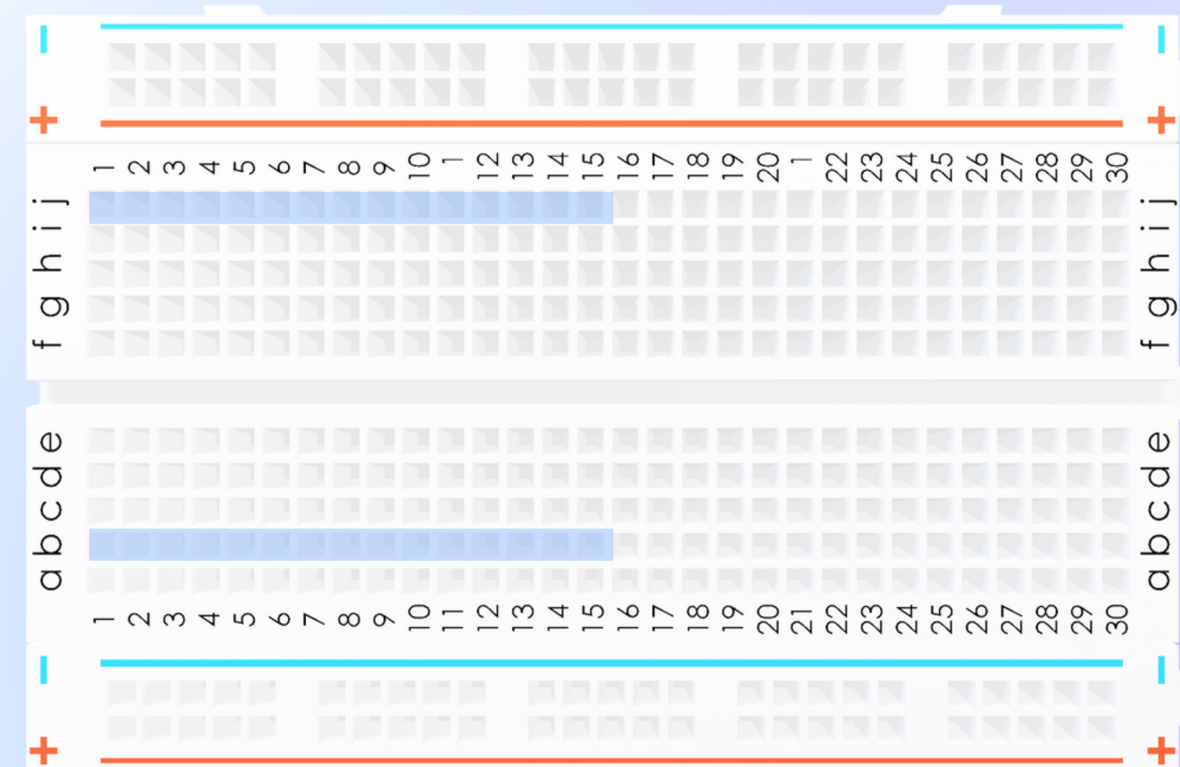
Place the Brain on the Breadboard

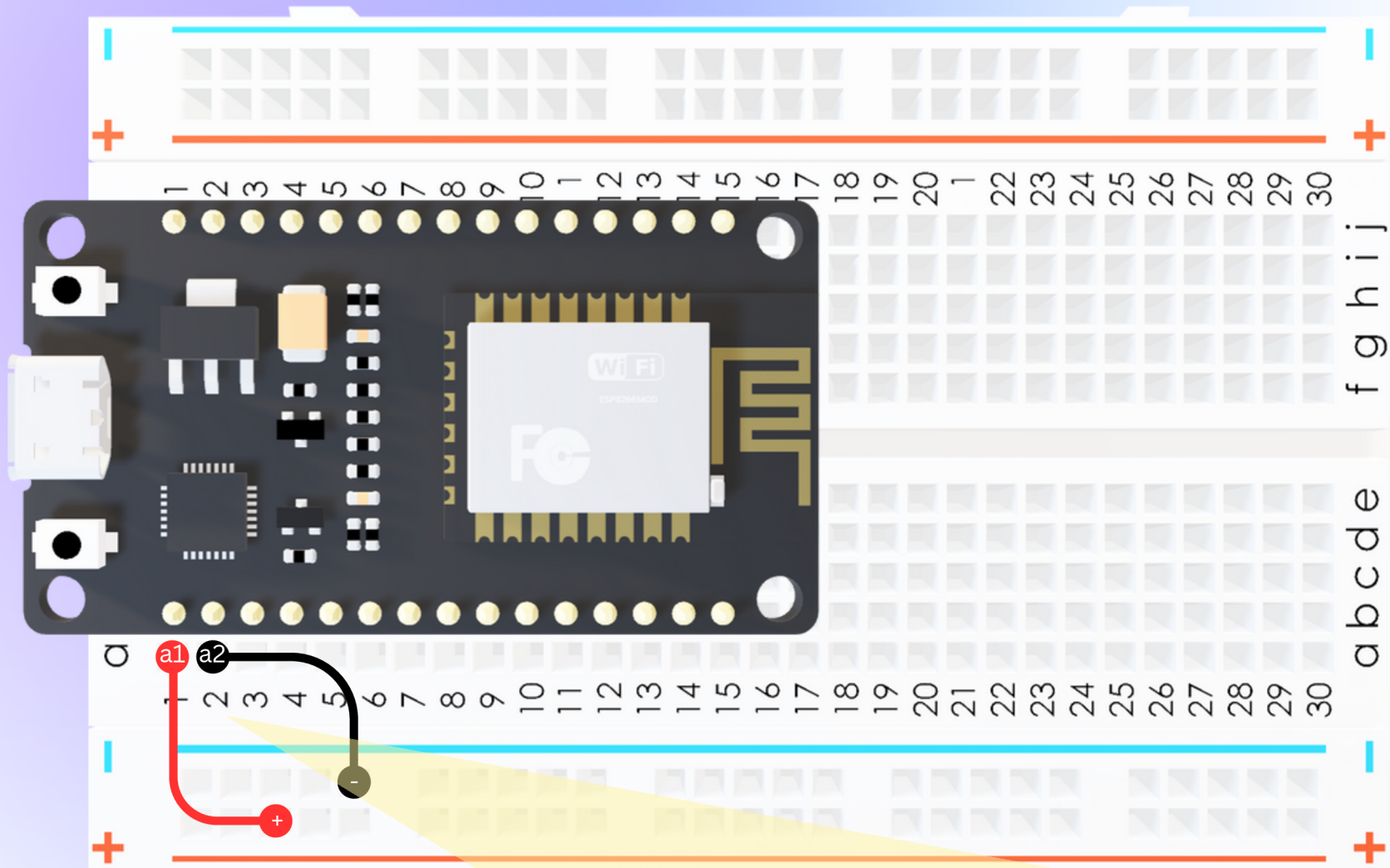
将大脑放在面包板上



Ensure that the left pins are placed on points b1 to b15 and the right pins are placed on points j1 to j15. The USB port should face the outer direction of the breadboard.

确保左侧引脚放置在点 b1 至 b15 上，右侧引脚放置在点 j1 至 j15 上。USB 端口应面向面包板的外部方向。



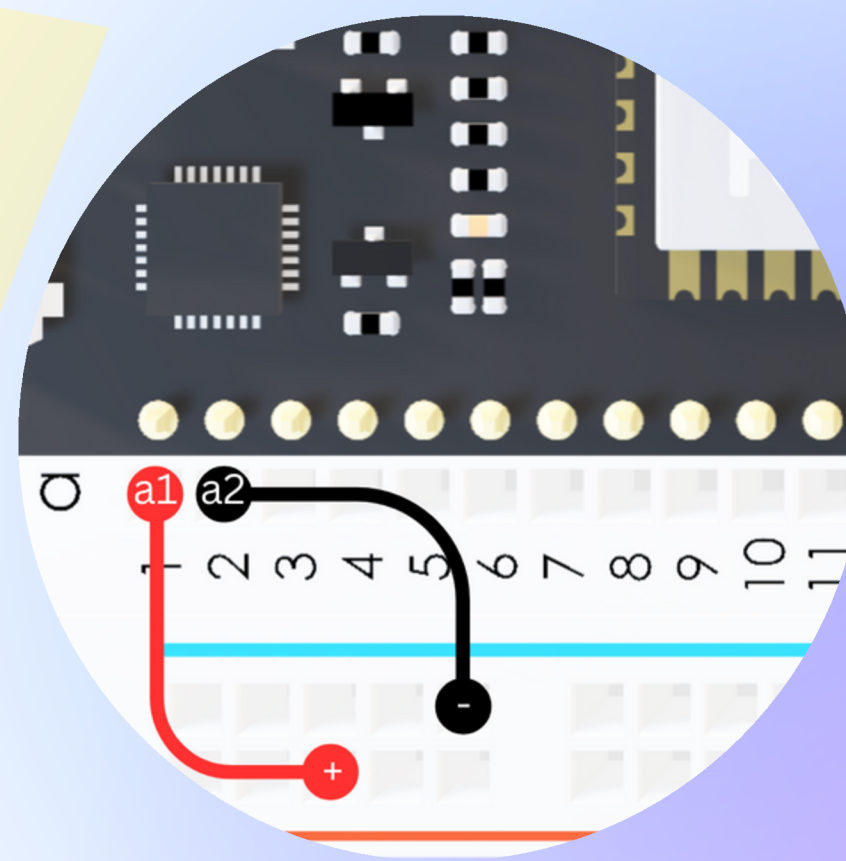


Connect the power ports

Connect point a1 with a point in the positive bus line using a jumper wire. Likewise, connect point a2 with a point in the negative bus line.

连接电源端口

使用跳线将点 a1 与正极总线中的一点连接。同样，将点 a2 与负母线中的一点连接。

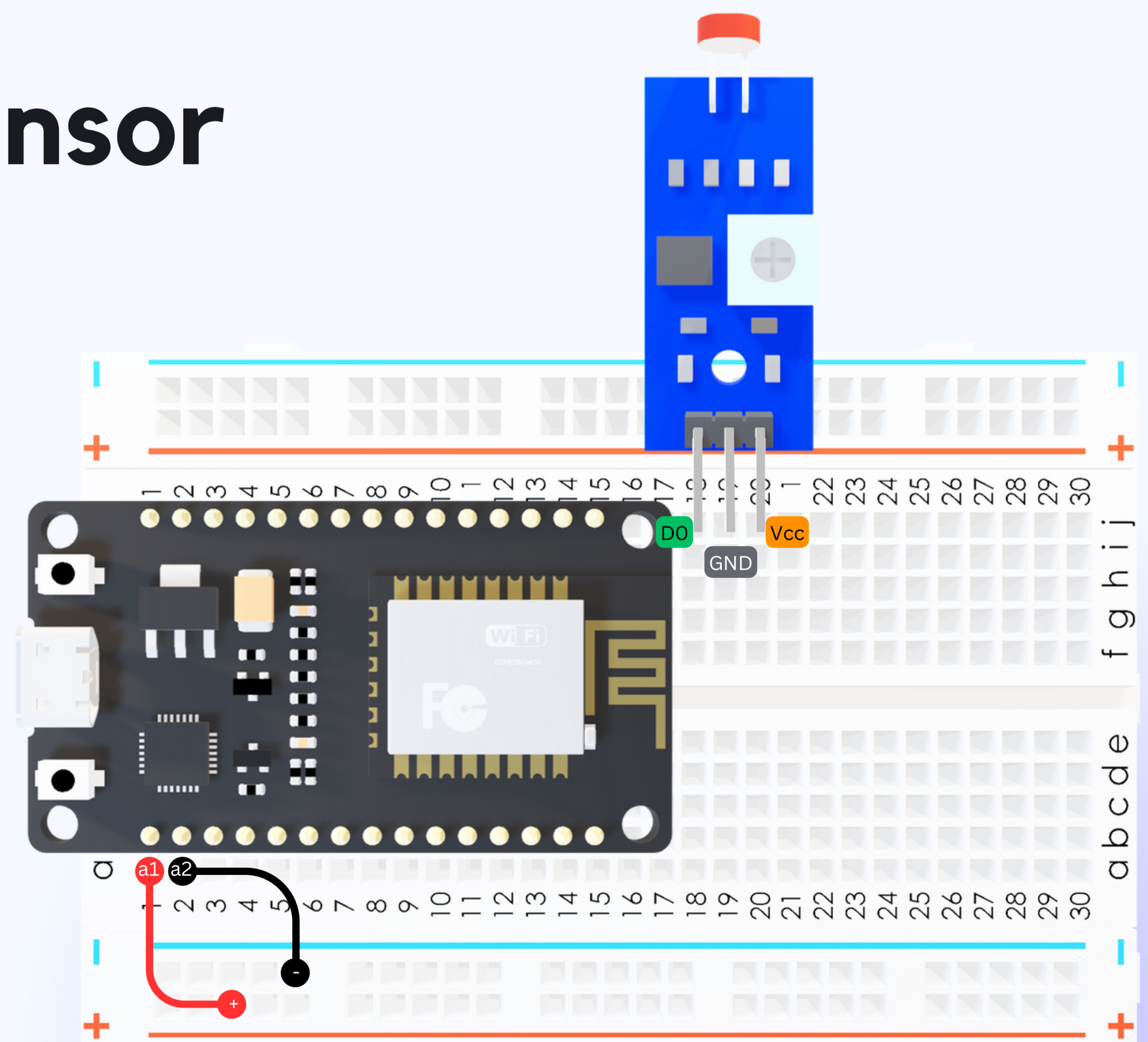
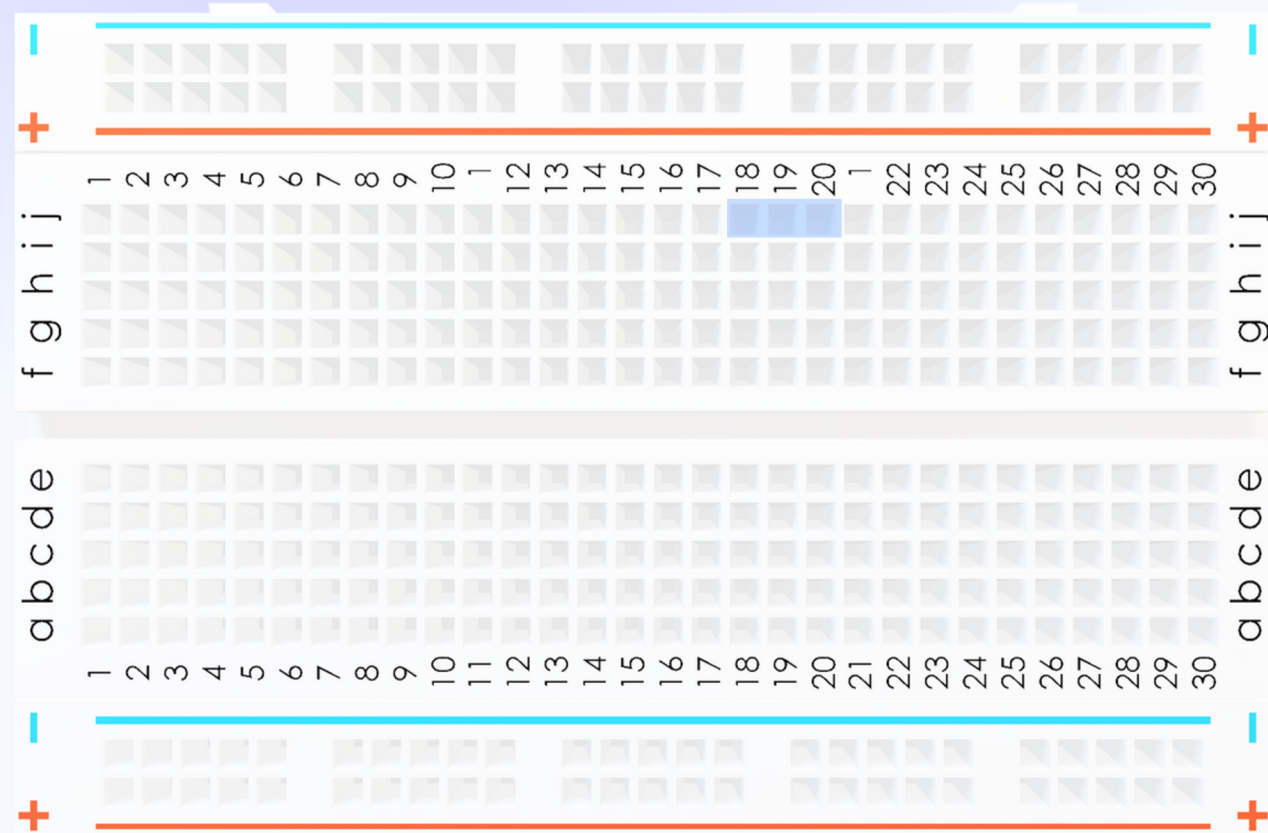


Place the Light Sensor

放置光传感器

Place the Light sensor on the breadboard ensuring that the D0 Pin is placed on the point j18, GND pin is placed on the point j19 and Vcc is placed on the point j20

将光传感器放置在面包板上，确保 D0 引脚放置在点 j18 上，GND 引脚放置在点 j19 上，Vcc 放置在点 j20 上

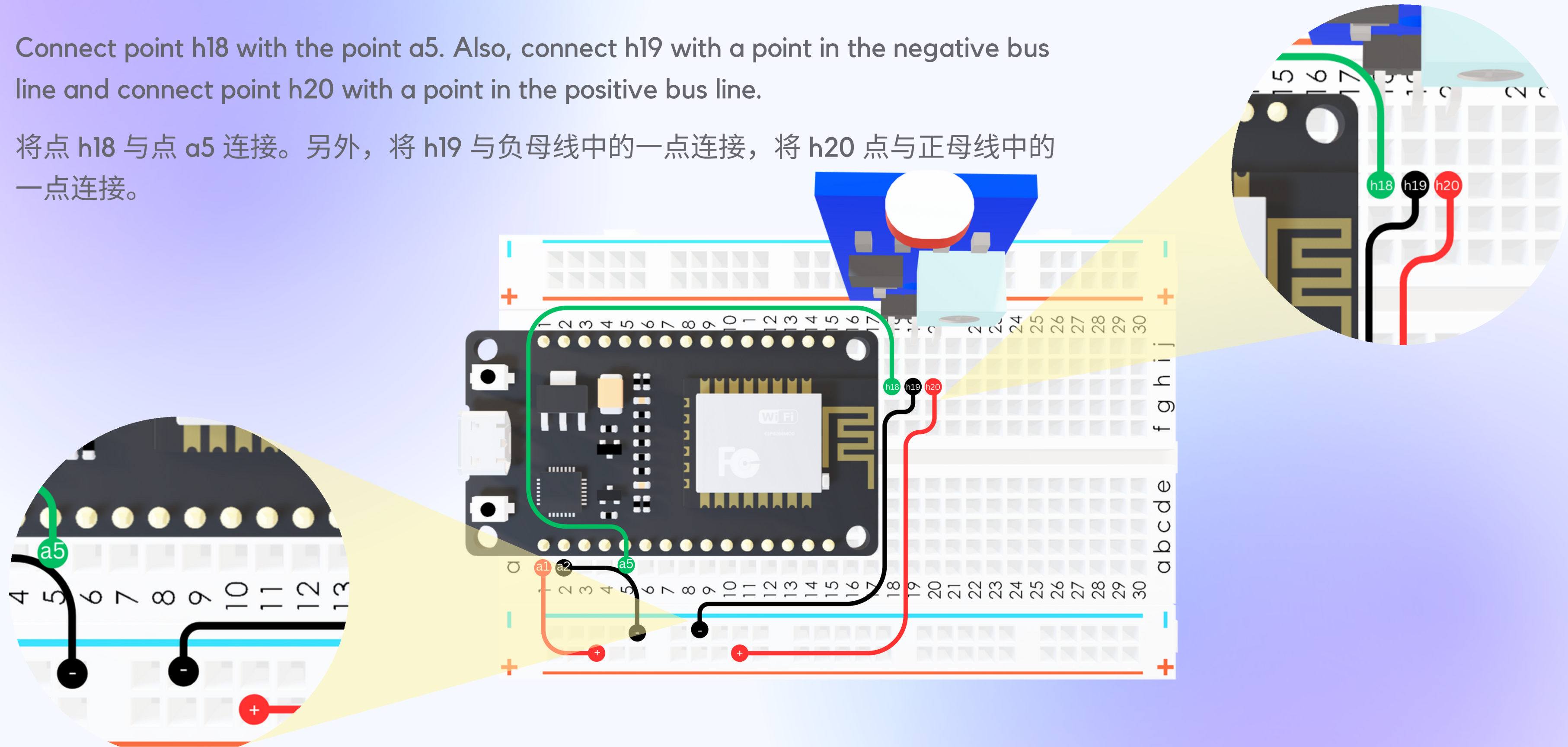


Complete the Light Sensor Connections

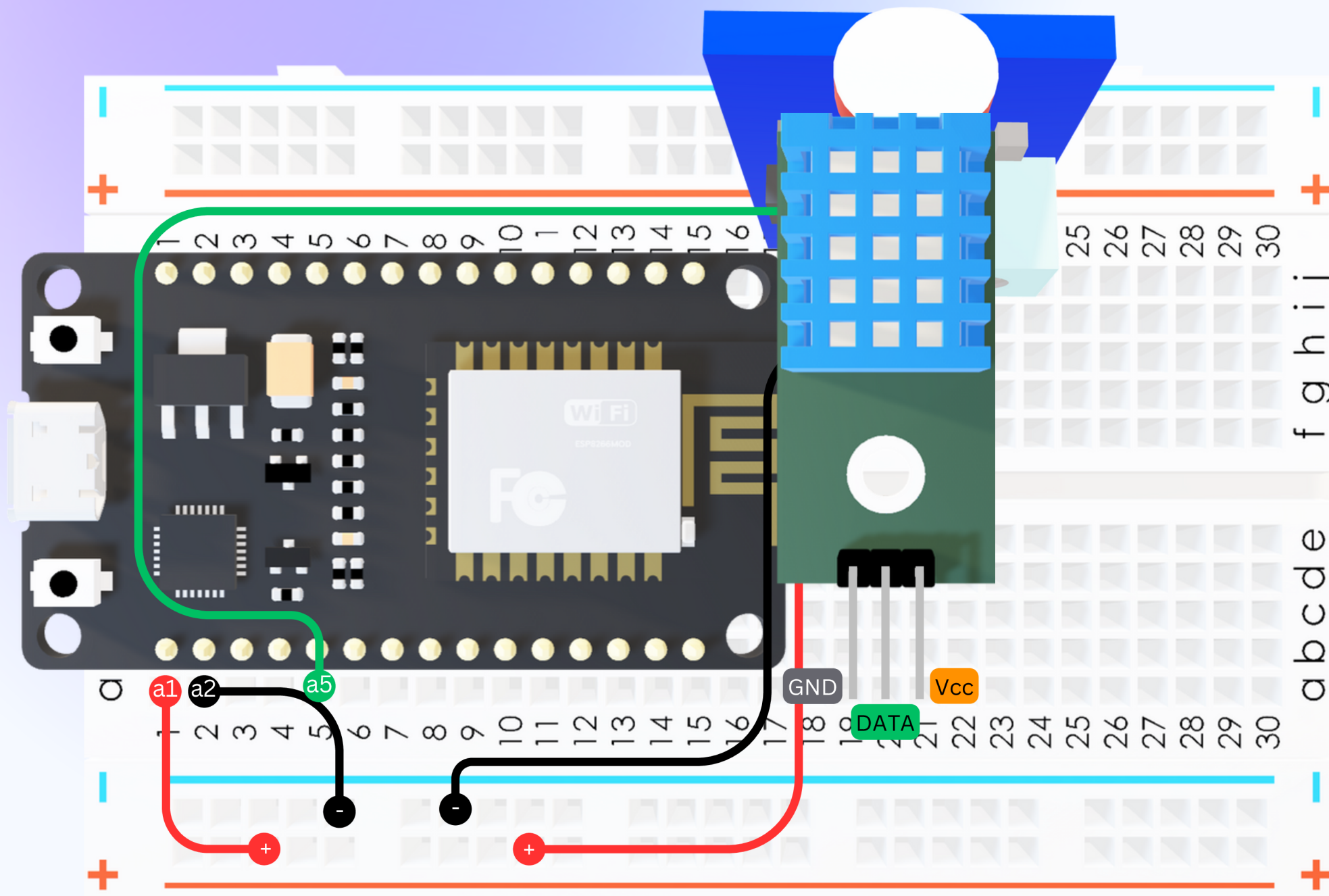
完成光传感器连接

Connect point h18 with the point a5. Also, connect h19 with a point in the negative bus line and connect point h20 with a point in the positive bus line.

将点 h18 与点 a5 连接。另外，将 h19 与负母线中的一点连接，将 h20 点与正母线中的一点连接。

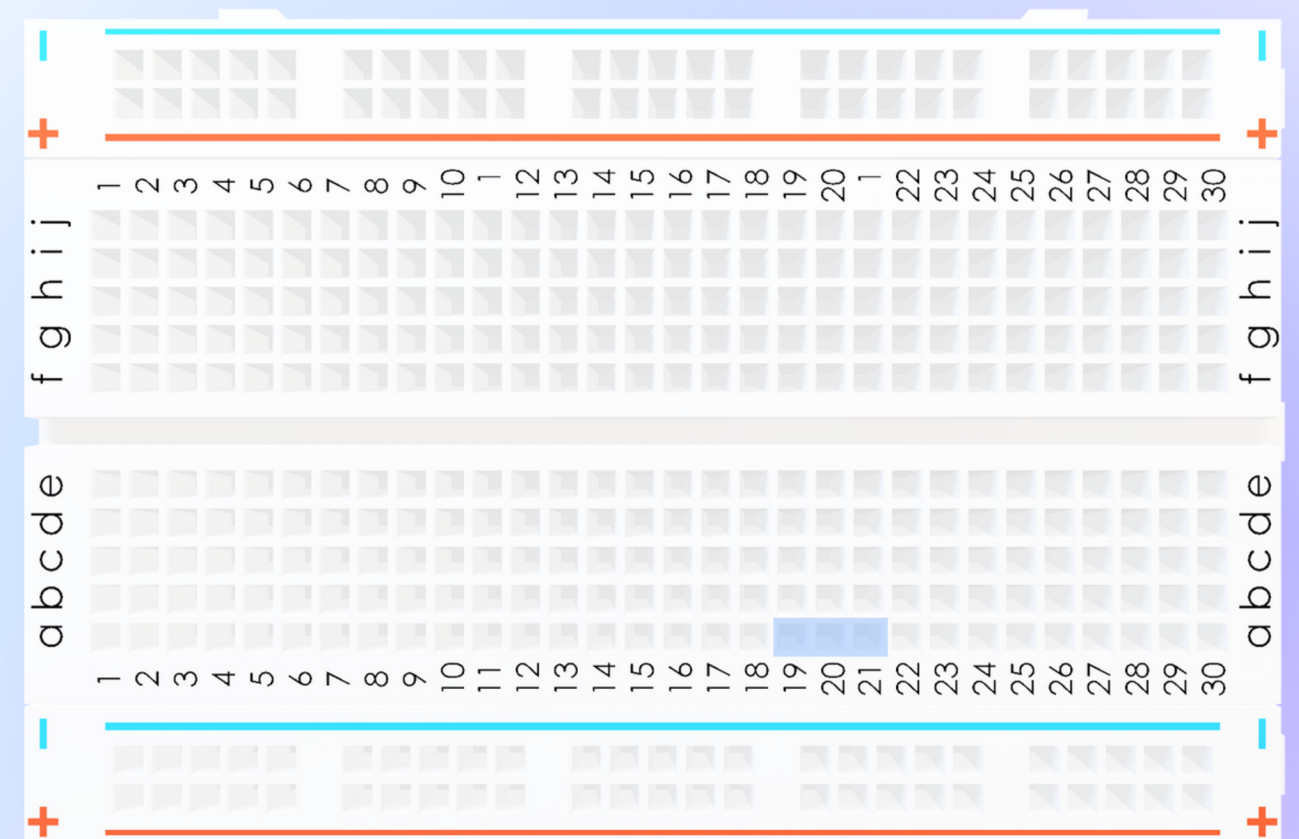


Place the Temperature Sensor 放置温度传感器



Place the temperature sensor on the breadboard ensuring that the GND Pin is placed on the point a19, DATA pin is placed on the point a20 and Vcc is placed on the point a21

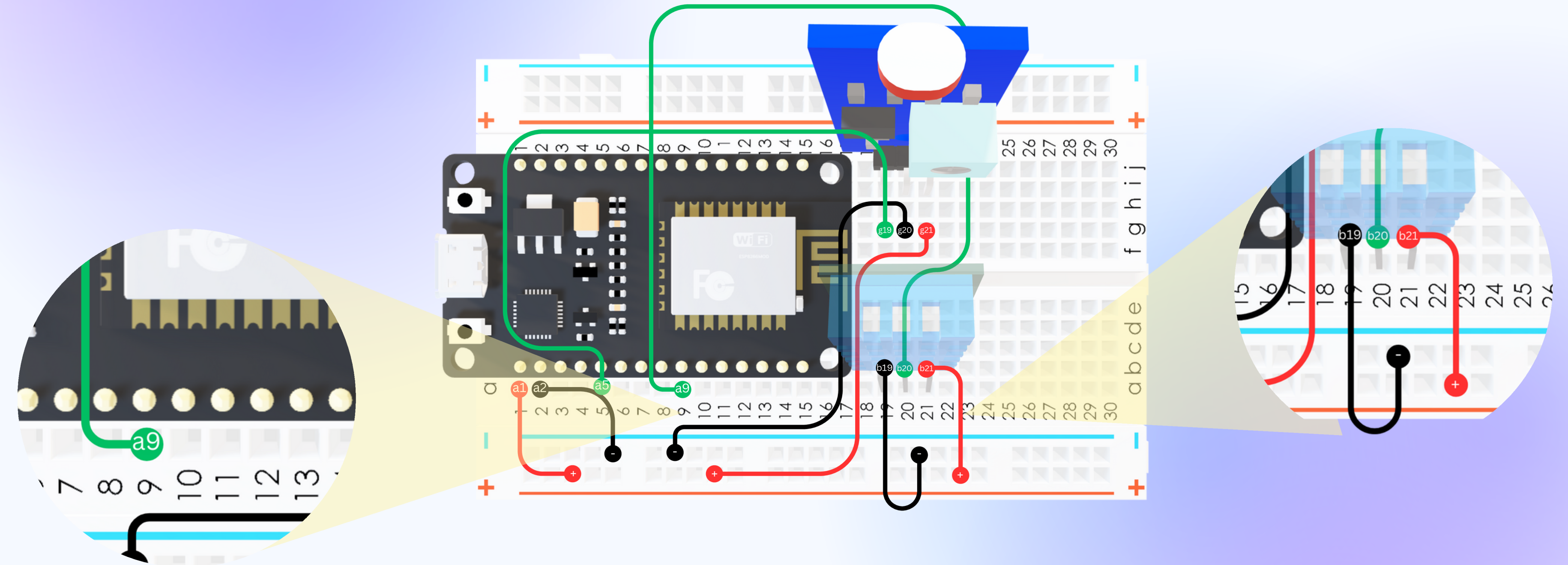
将温度传感器放置在面包板上，确保 GND 引脚放置在 a19 点，DATA 引脚放置在 a20 点，Vcc 放置在 a21 点



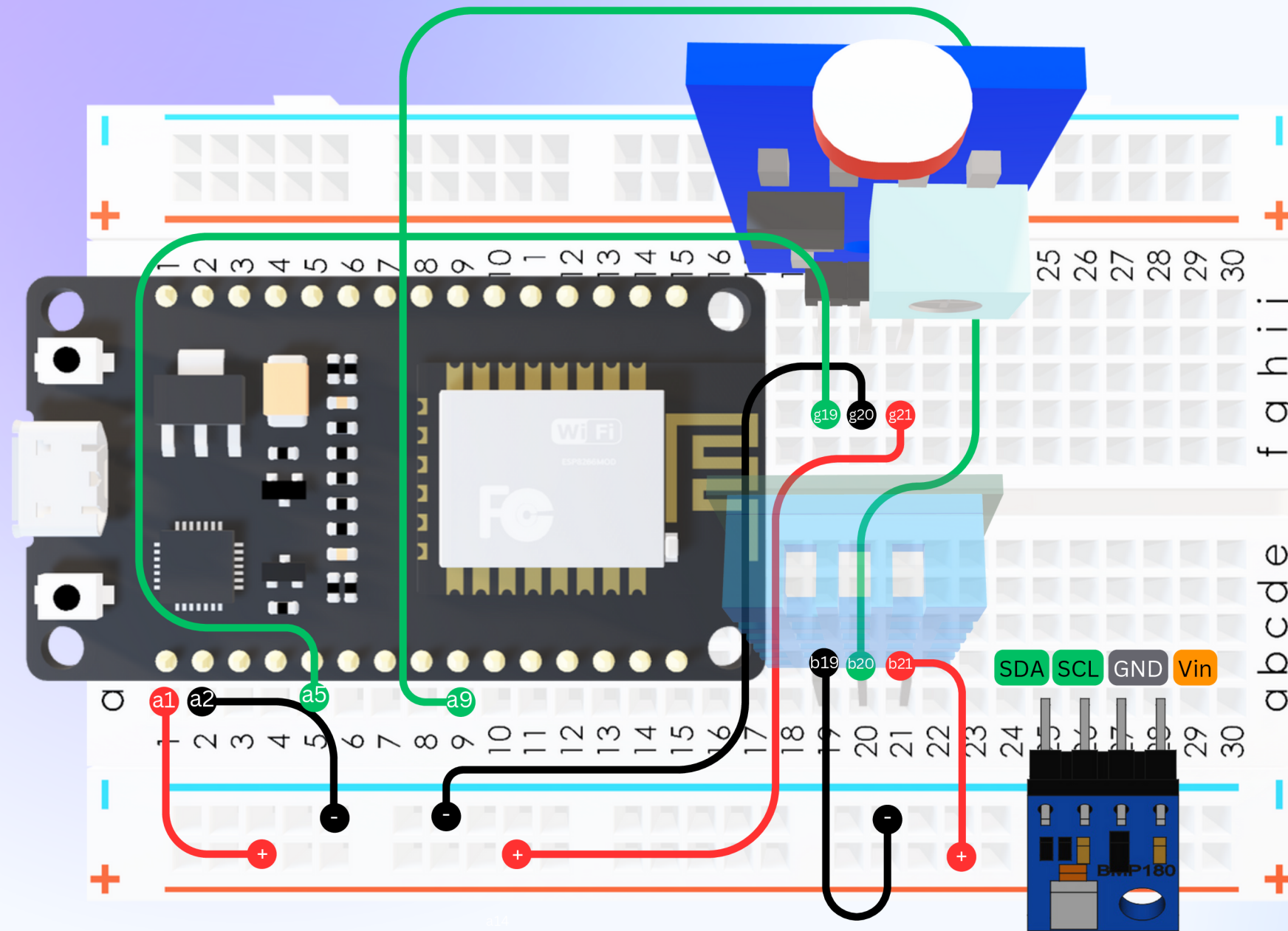
Complete the temperature sensor Connections 完成温度传感器连接

Connect point b20 with the point a9. Also, connect b19 with a point in the negative bus line and connect point b21 with a point in the positive bus line.

将点 b20 与点 a9 连接。另外，将 b19 与负母线中的点连接，并将点 b21 与正母线中的点连接。

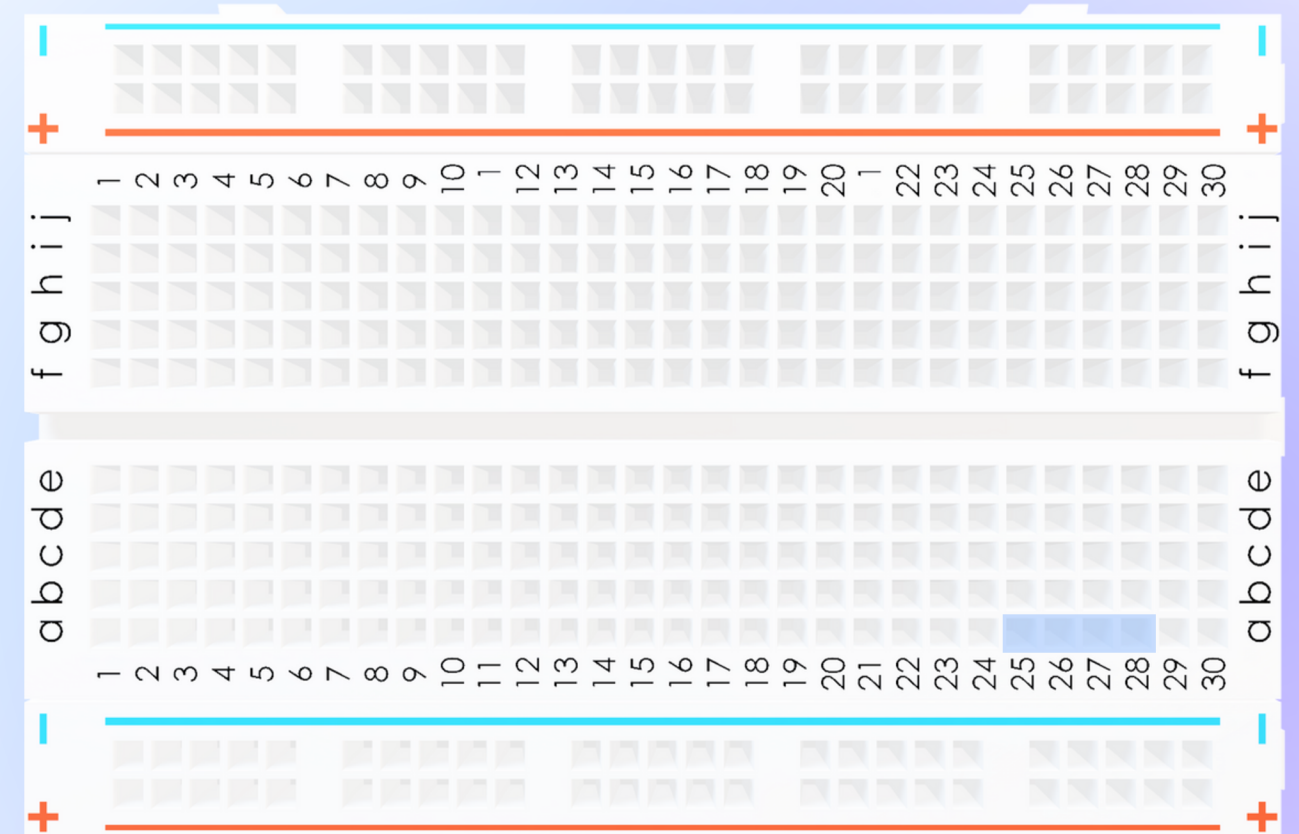


Place the atmospheric Sensor 放置大气传感器



Place the atmospheric sensor on the breadboard ensuring that the SDA Pin is placed on the point a25, SCL pin is placed on the point a26, GND pin is placed on the point a27 and Vin is placed on the point a28

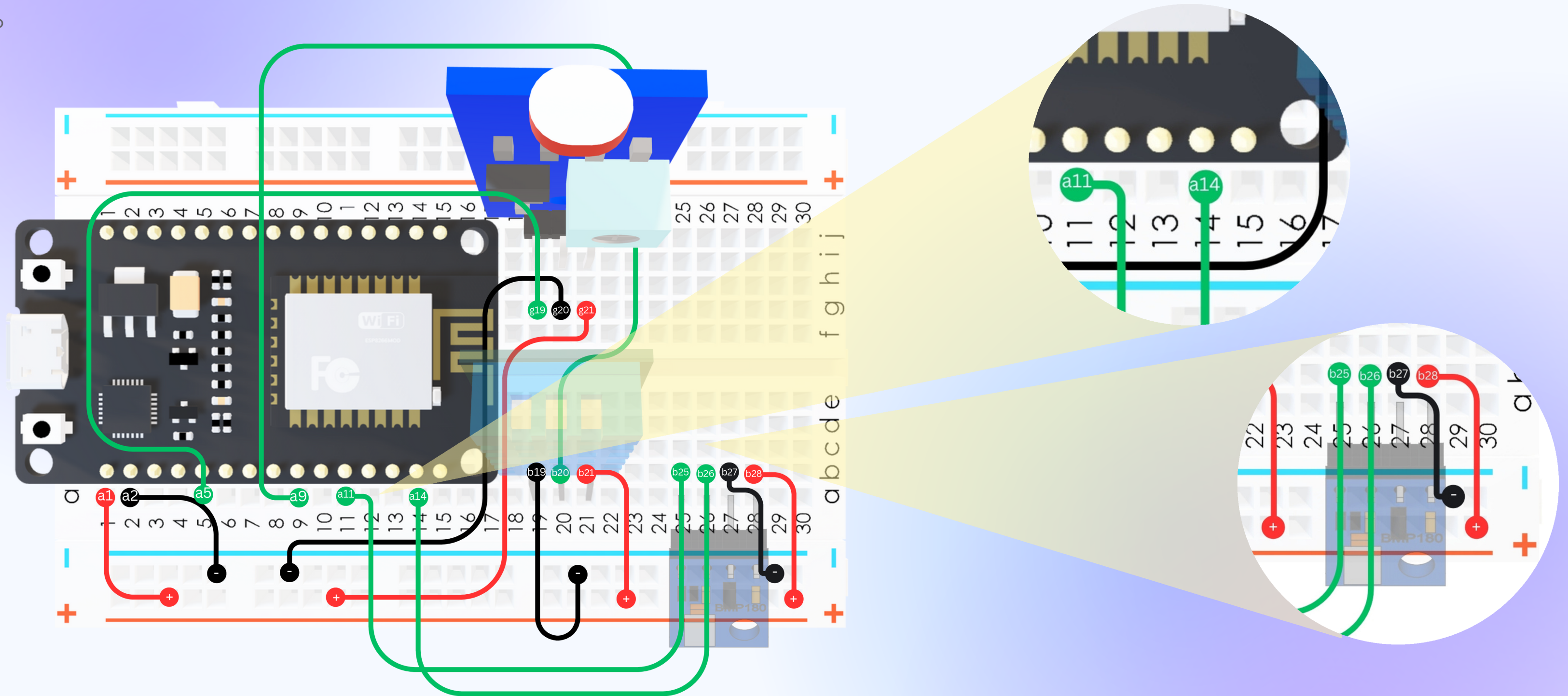
将大气传感器放置在面包板上，确保 SDA 引脚放置在 a25 点，SCL 引脚放置在 a26 点，GND 引脚放置在 a27 点，Vin 放置在 a28 点



Complete the atmospheric Sensor Connections 完成大气传感器连接

Connect point b25 with the point a11 and point b26 with the point a14. Also, connect b27 with a point in the negative bus line and connect point b28 with a point in the positive bus line.

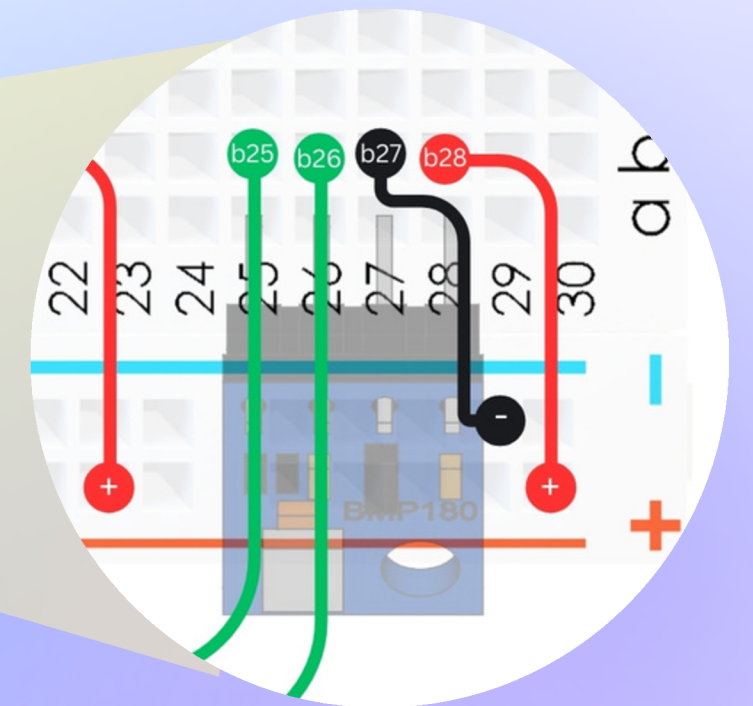
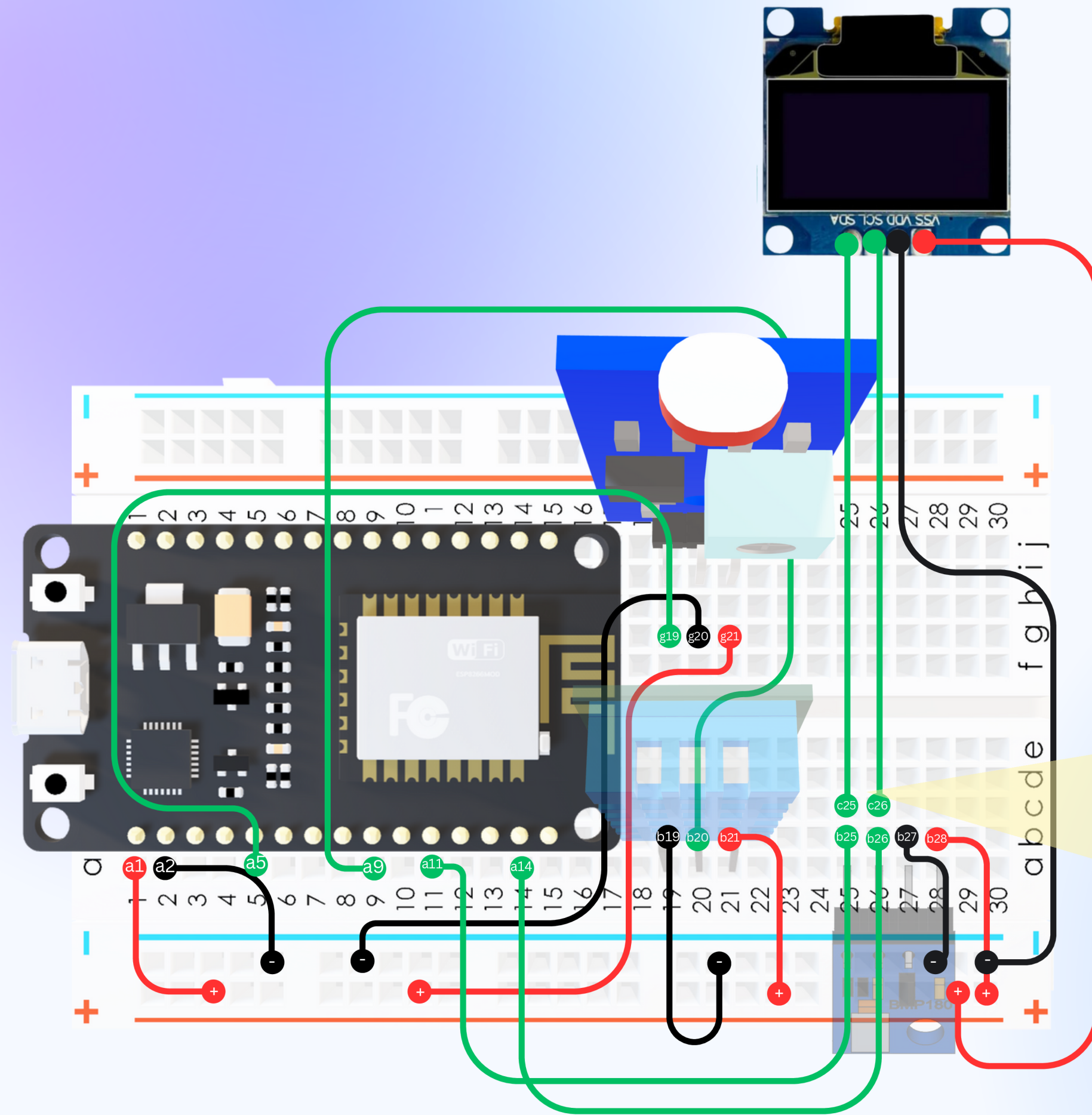
将点 b25 与点 a11 连接，将点 b26 与点 a14 连接。此外，将 b27 与负母线中的一点连接，并将点 b28 与正母线中的一点连接。



Connect the OLED Display 连接 OLED 显示屏

Connect the OLED Display on the breadboard ensuring that the SDA Pin is placed on the point c25, SCL pin is placed on the point c26, GND pin is placed on the negative bus line and Vin is placed on the positive bus line.

将 OLED 显示屏连接到面包板上，确保 SDA 引脚放置在 c25 点上，SCL 引脚放置在 c26 点上，GND 引脚放置在负极总线上，Vin 放置在正极总线上。



Final Circuit

最终电路

